



Office Address:

303, 3rd Floor, 11 Mayur, Opp. Mrutyunjayeshwar Temple, Near Karve Statue, Kothrud, Pune - 411038

📞 78-1080-8080 | 85-5100-8080

[www.badhekargroup.in](http://www.badhekargroup.in)

## Sanjeevan

Site Address:

Opp. BSNL office, Aundh, Pune - 07

📞 78-1080-8080 | 85-5100-8080



MahaRERA No. P52100050507  
<https://maharera.mahaonline.gov.in/>

Sales Partner:



Disclaimer: All art renderings, illustrations, photographs and pictures contained in this advertisement are an artist's impression only and the same should not be construed to be the final image/view of the final project. Every interested purchaser should take note of this express representation. All specifications of the flat shall be as per the final agreement between the parties.



## Sanjeevan

3 BHK

Aundh-Baner, Pune

Welcome bliss with  
open doors and open arms



# About Badhekar Group

Founded in 2010, Badhekar Group is Pune's one of the most renowned redevelopment builders. With projects at the prime locations of the city, we have 25+ ongoing projects comprising over 2000 flats. To our credit, we have completed 40+ projects with a strong footprint across the city.

At everything we do, our promise is unwavering trust, quality and commitment. Celebrating this philosophy, we have provided homes to more than 3000 families and helped them build eternal memories. At the helm of things at the Group is Mr. Pravin Badhekar, Chairman and Managing Director, who has been making an indelible impact in the real estate sector for the past twenty years.





## Project Brief

A blissful abode in the developing heart of the city, Sanjeevan promises all the hallmarks of a Badhekar Property while giving you lavish space to make it your unique own. Breathtaking views with expertly designed homes, this Badhekar project is a perfect blend of convenience and serenity for those seeking an ideal living experience.

Furnishing you with a 3 BHK fit for royalty, Sanjeevan invites you to focus on living your blissful best in one of Pune's most lively city centres. Whether it's catching the newest action flick in the theatres or grabbing last minute supplies for a work trip, Sanjeevan's ideal location makes meeting any want or requirement a walk in the park.

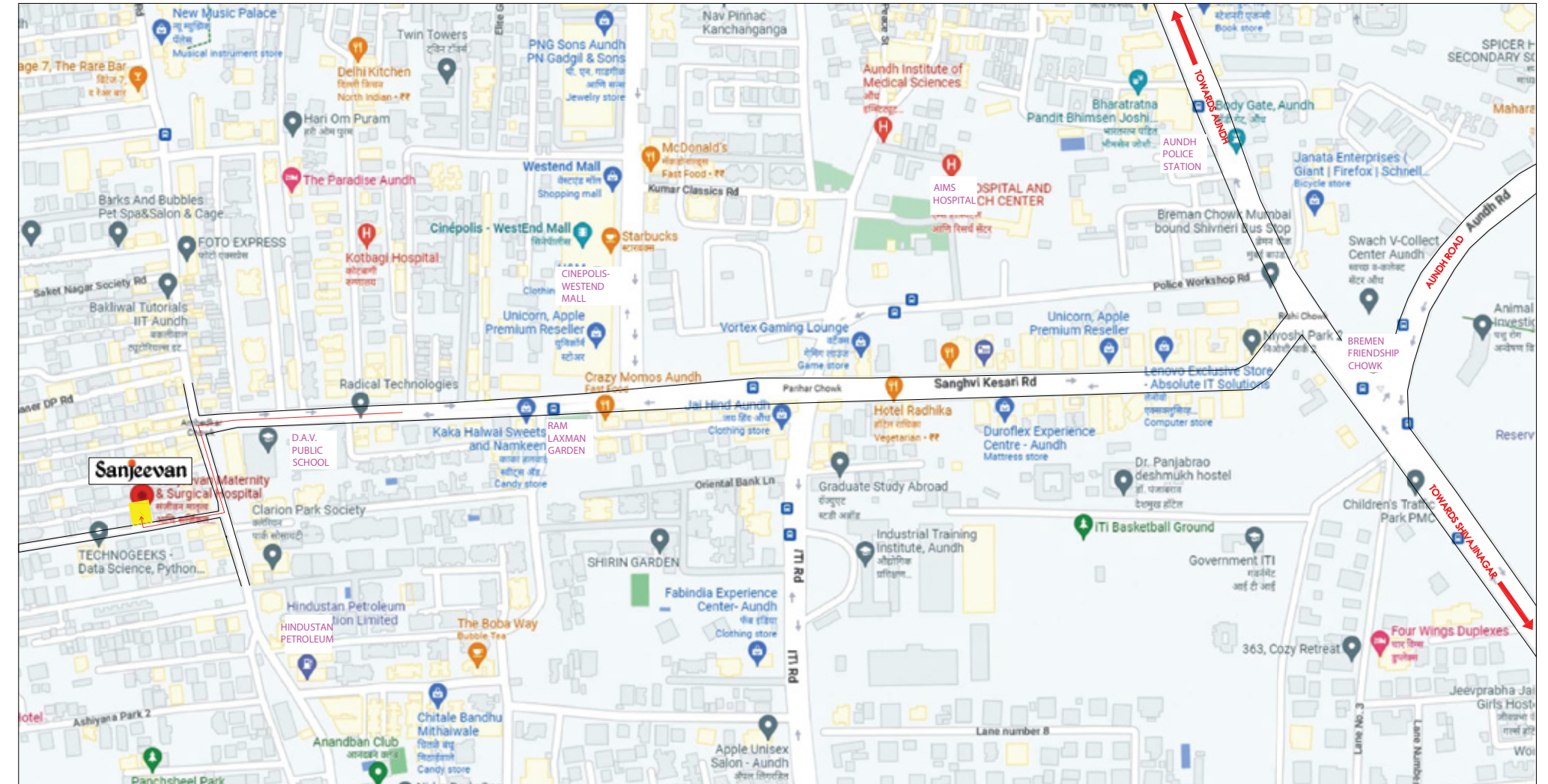




# Location

Situated in the highly sought-after locality of Aundh, Sanjeevan promises the good life in every way. Located right around the corner from the impressive Westend Mall and less than a kilometre away from the neighbourhood D Mart, Sanjeevan ensures that whatever the need, the solution is never more than a short walk away. And with neighbourhood landmarks like Saishree Hospital and Dr. Babasaheb Ambedkar College only a quick car ride away, the health and development of you and your family is always secure.

In addition to being a short while away from major hotspots like Pune University, Hinjewadi IT Park and more, the locality boasts uninterrupted connectivity to major highways and junctions, making it a favourite for the city's on-the-move cosmopolitan crowd.





## Amenities and Specifications



Terrace Garden



Artificial Garden



Gas Pipeline as per MNGL



Wifi Provision in Common Area



Video Door Phone



Solar Water



CCTV



Open Gym



Gazebo

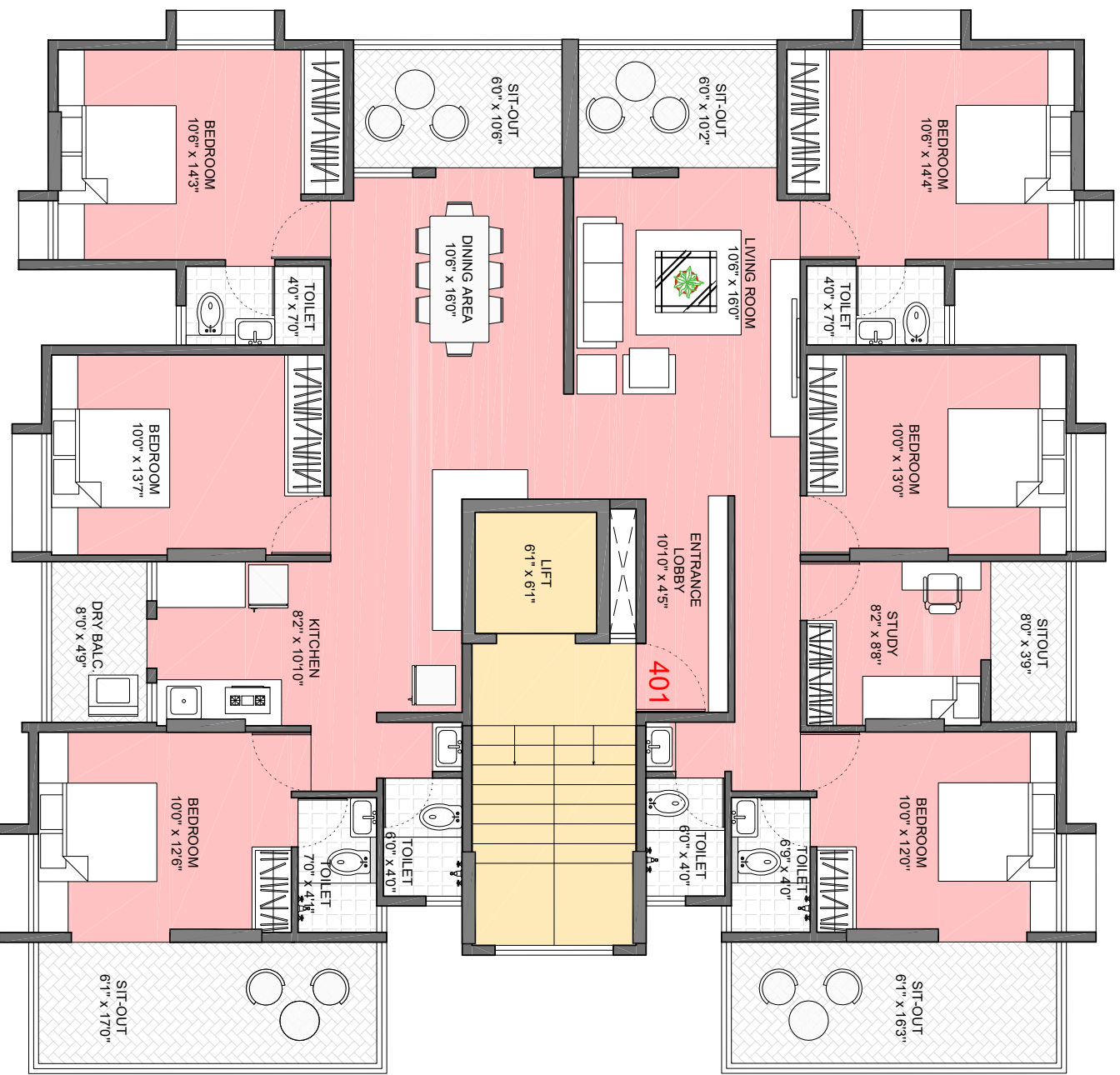


Walking Plaza





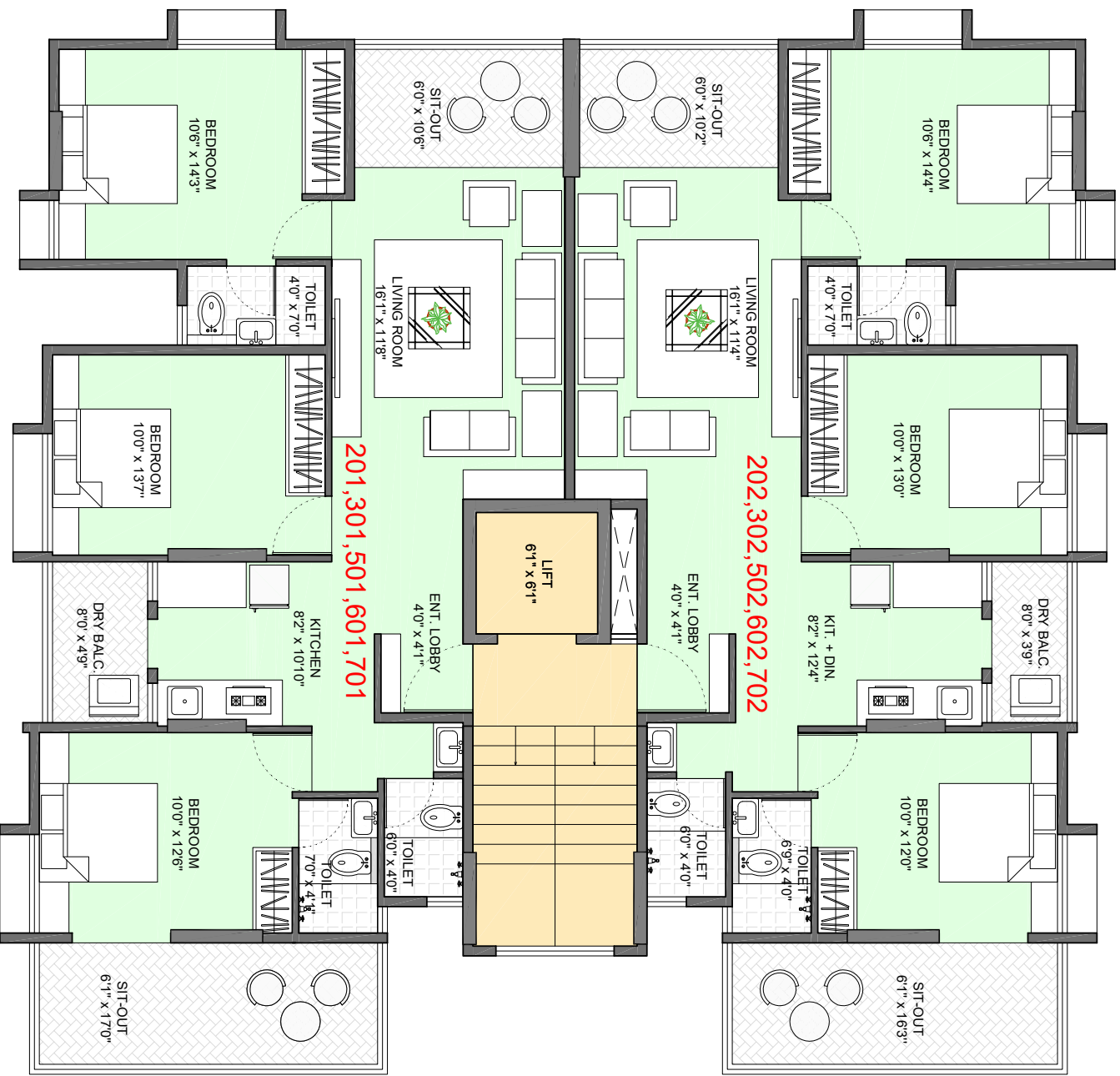




Sanjeevan

4TH FLOOR PLAN

AREA STATEMENT (IN SQ.FT)				
FLAT NO.	FLAT TYPE	FLAT CARPET	BALCONY / TERRACE CARPET	TOTAL CARPET
401	6.5-BHK	1788	395	2183
				2947



Sanjeevan

2nd,3rd,5th,6th,7th FLOOR PLAN

AREA STATEMENT (IN SQ.FT)				
FLAT NO.	FLAT TYPE	FLAT CARPET	BALCONY / TERRACE CARPET	TOTAL CARPET
201,301,501,601,701	3-BHK	892	203	1095
202,302,502,602,702	3-BHK	890	189	1079
				1457

