



Office Address:

303, 3rd Floor, 11 Mayur, Opp. Mrutyunjayeshwar Temple, Near Karve Statue, Kothrud, Pune - 411038

☎ **78-1080-8080 | 85-5100-8080**

www.badhekargroup.in



SHREEKUNJA

Site Address:

Opp. Date Mandap Wale, Kulashri Soc, Commins Col. Rd, Karve Nagar, Pune - 52

☎ **78-1080-8080 | 85-5498-8080**



MahaRERA No. P52100047854
<https://maharera.mahaonline.gov.in/>

Sales Partner:



Disclaimer: All art renderings, illustrations, photographs and pictures contained in this advertisement are an artist's impression only and the same should not be construed to be the final image/view of the final project. Every interested purchaser should take note of this express representation. All specifications of the flat shall be as per the final agreement between the parties.



SHREEKUNJA

3 BHK

Karve Nagar, Pune

**प्रत्येक क्षणात, प्रत्येक कोपऱ्यात
Grace आणि Comfort**



About Badhekar Group

Founded in 2010, Badhekar Group is Pune's one of the most renowned redevelopment builders. With projects at the prime locations of the city, we have 21+ ongoing projects comprising over 2000 flats. To our credit, we have completed 40+ projects with a strong footprint across the city.

At everything we do, our promise is unwavering trust, quality and commitment. Celebrating this philosophy, we have provided homes to more than 3000 families and helped them build eternal memories. At the helm of things at the Group is Mr. Pravin Badhekar, Chairman and Managing Director, who has been making an indelible impact in the real estate sector for the past twenty years.



Project Brief

Under the luxurious spell. With Shreekunja, where comfort & connectivity works like a charm. Located in Karve Nagar, the spacious 2 & 3 BHK apartments here from Badhekar Group make you rethink living to the fullest with easy connectivity to the city's finest educational institutions, industrial hubs, healthcare facilities, malls and more. Going from Cummins College to Deenanath Mangeshkar Hospital and beyond.

The vast spaces of the apartments to unwind in, coupled with the easy connectivity, make every moment spent here magical.

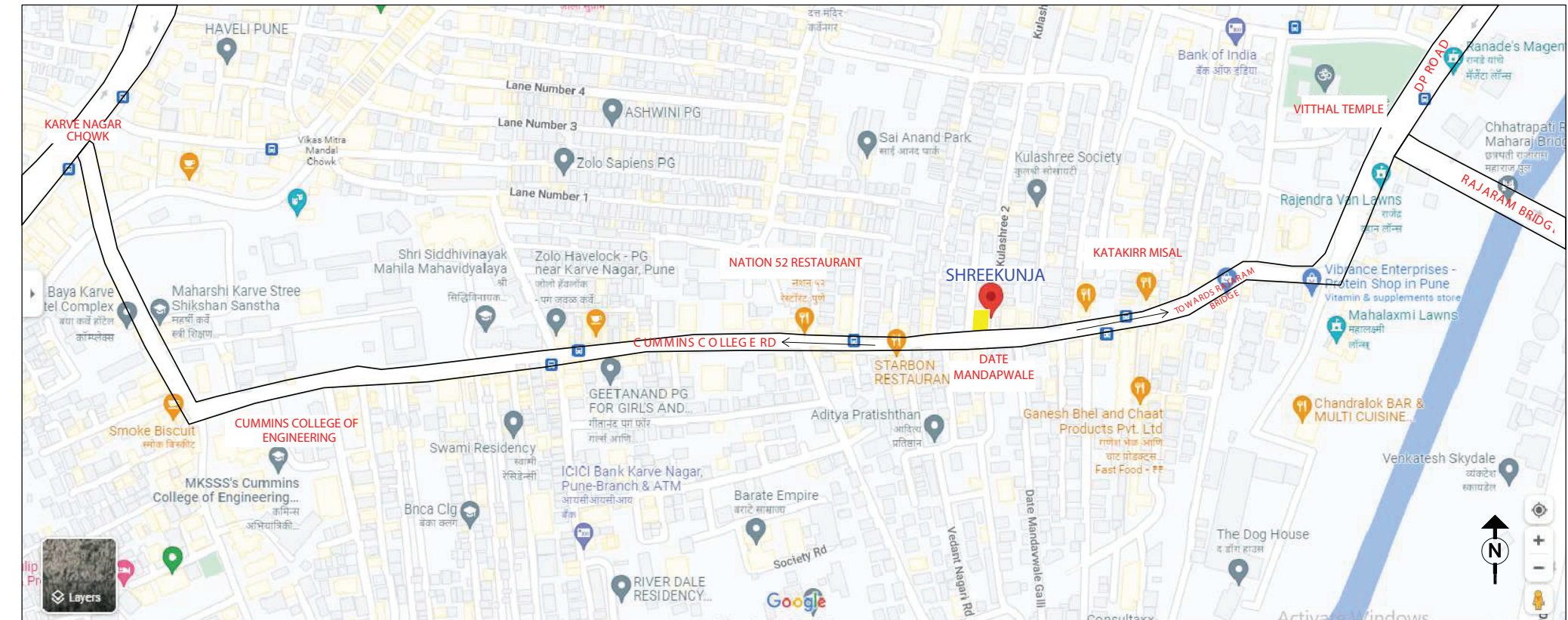


Location

Karve Nagar, housing several prominent names across healthcare, IT, education, and hospitality, has become the jewel of Pune that people from all four corners rush towards.

This has led to an enhancement in the retail and hotel sector here that elevates the living of everyone around it. Close to Deenanath Mangeshkar Hospital & Research Centre and MKSS's Cummins College of Engineering for Women, Shreekunja is ideal for local and new residents. With such connectivity, all four metro stations in Kothrud are 10 mins away from the project.

With Shreekunja, stay connected at all times.



Amenities and Specifications



Grand Entrance
Lobby



Rooftop
Garden



Open Gym



Gazebo



Walking
Plaza



Artificial
Garden



Solar Water
Provision



CCTV for
Common Area



Gas Pipeline
Provision



Wi-Fi Provision
for Common area



Video Door
Phone



Generator
Backup for lift
and Common
area



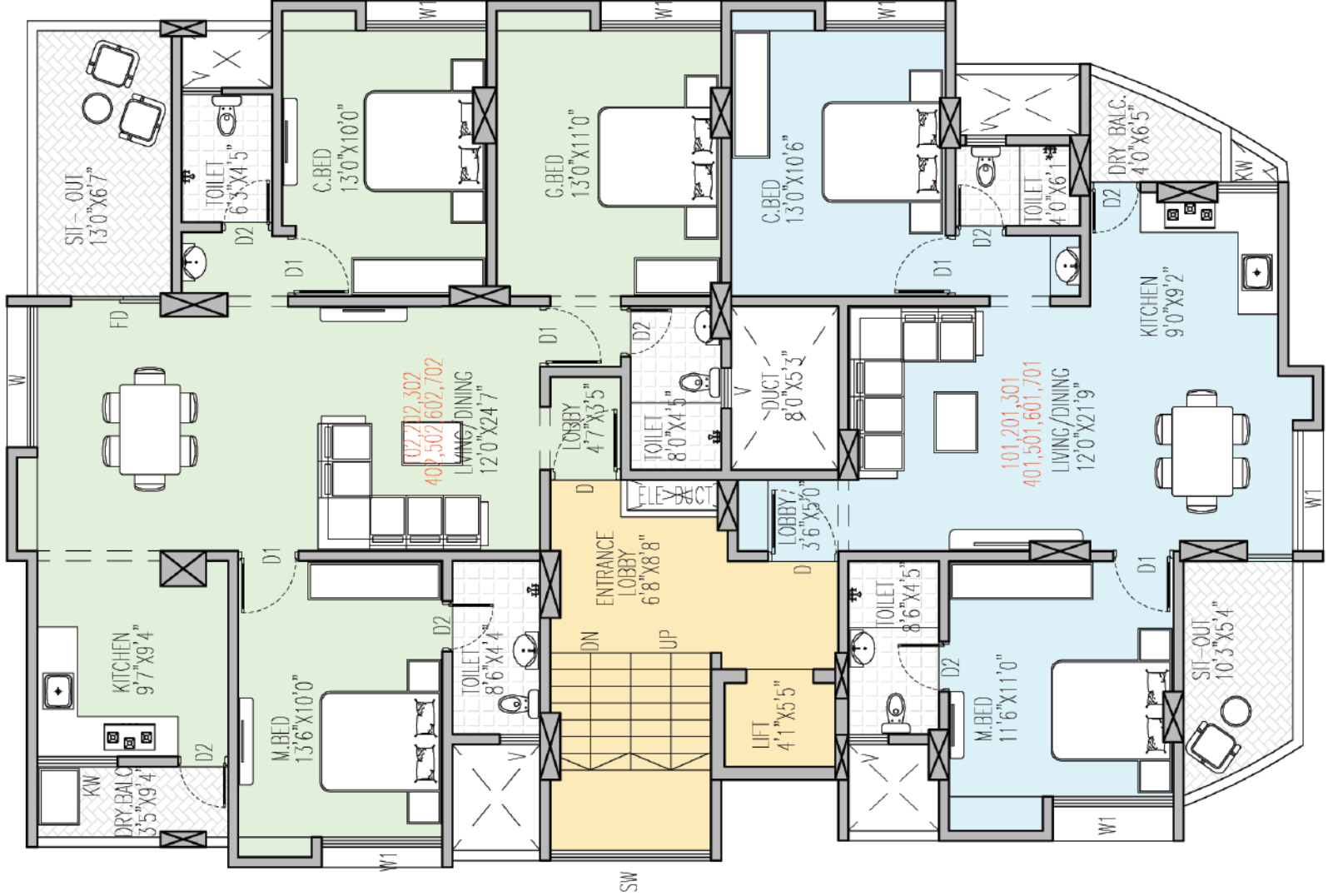
Pyramid Vastu
Concept at
Foundation Level



Common Toilet
at Parking



Floor Plans



TYPICAL FLOOR PLAN
(FIRST TO SEVENTH FLOORS)

AREA STATEMENT (IN SQ.FT)				
FLAT NO.	FLAT TYPE	FLAT CARPET	BALCONY / TERRACE CARPET	TOTAL SALEABLE
101 - 701	2-BHK	751	55	1088
102 - 702	3-BHK	1054	85	1139

